

© Crown copyright and database rights [2011] Ordnance Survey 100022697

This map is reproduced from Ordnance Survey material with the permission of Ordnance Survey on behalf of the Controller of Her Majesty's Stationary Office (c) Crown copyright. Unauthorised reproduction infringes Crown copyright and may lead to prosecution or civil proceedings.

Scale 1/1250 Date 8/7/2016

Centre = 393917 E 396344 N

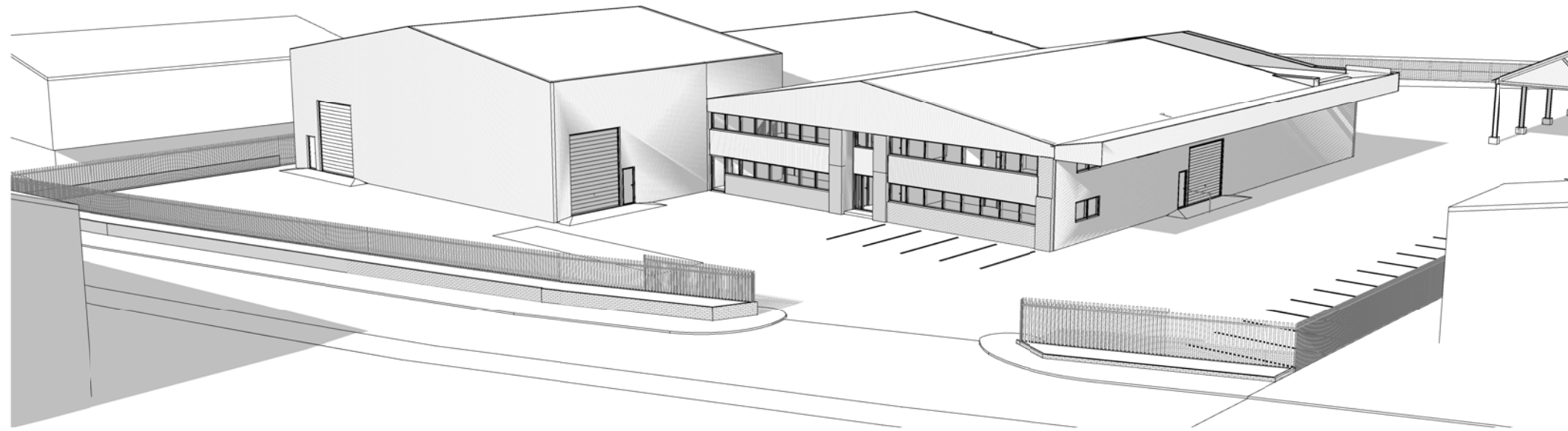


© Crown copyright and database rights [2011] Ordnance Survey 100022697

This map is reproduced from Ordnance Survey material with the permission of Ordnance Survey on behalf of the Controller of Her Majesty's Stationary Office (c) Crown copyright. Unauthorised reproduction infringes Crown copyright and may lead to prosecution or civil proceedings.

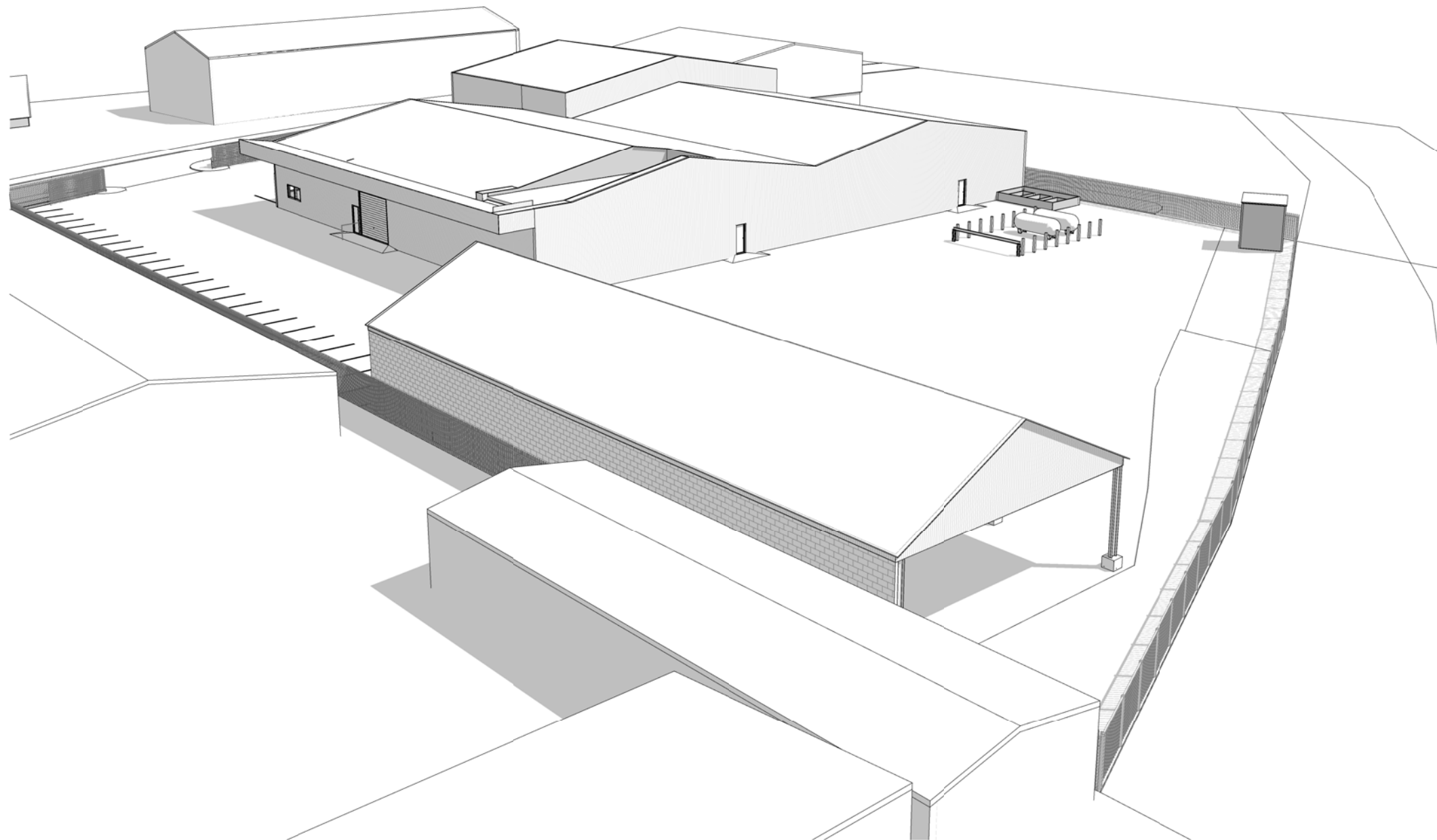
Scale 1/1250 Date 8/7/2016

Centre = 393917 E 396344 N



© C.R. Parrott Consultants Limited  
 All dimensions & details given on this drawing are to be checked on site by the contractor prior to works starting. Any discrepancies to be notified to C.R. Parrott Consultants Limited as soon as possible.  
 This drawing is the property of C.R. Parrott Consultants Limited and must not be copied or reproduced either in whole or part.


Perspective View of Site from North East as Existing



Perspective View of Site from North West as Existing

# PLANNING

Rev.	Date.	Description.	Issued.
<b>Revision Schedule</b>			



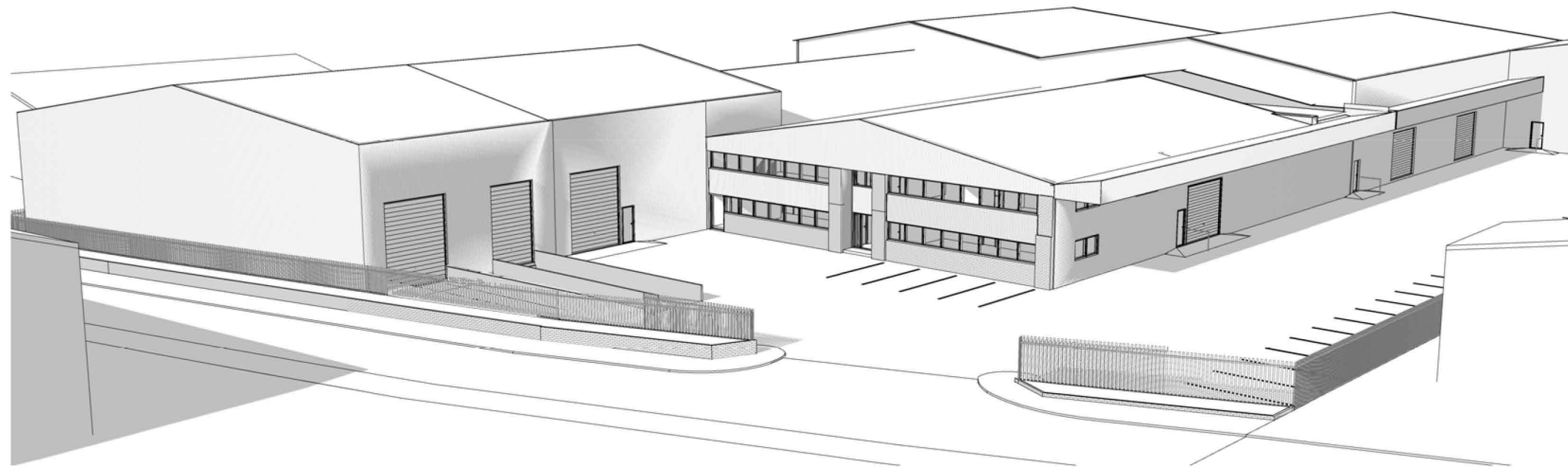
**CR Parrott Consultants Limited**  
 Architecture . Structural Engineering . Project Management

Prince House, Queensway Court, Arkwright Way, Scunthorpe  
 T. 01724 278155 E.info@crparrott.co.uk  
 Suites F25-F26, Innovation Centre, Innovation Way, Europarc, Grimsby  
 T. 01472 268485 E.info@crparrott.co.uk

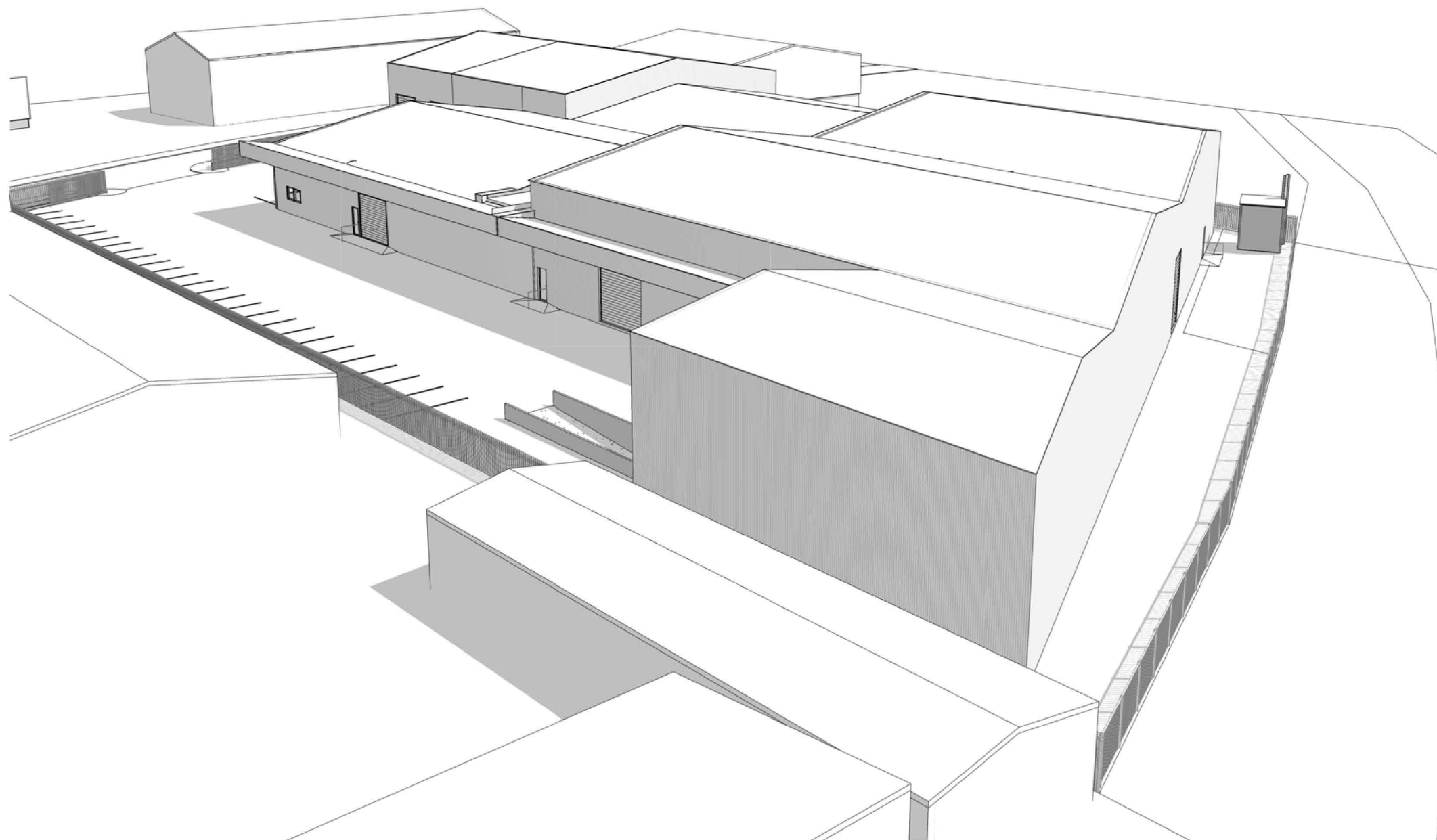
**New Warehouse Extension at Grove Products Limited**  
 Grove Products Limited, Broadway, Hyde, Cheshire, SK14 4QF

Perspective Views of Site as Existing

Drawn : AB	Date : 04/02/16	Scale :
Checked : MB	Drawing No. CP7351.	Sheet size. A3
Approved : MB	08	Revision



Perspective View of Site from North East



Perspective View of Site from North West

© C.R. Parrott Consultants Limited

All dimensions & details given on this drawing are to be checked on site by the contractor prior to works starting. Any discrepancies to be notified to C.R. Parrott Consultants Limited as soon as possible.

This drawing is the property of C.R. Parrott Consultants Limited and must not be copied or reproduced either in whole or part.

## PLANNING

Rev.	Date.	Description.	Issued.
A	09.03.16	Warehouse extended. Roofline adjusted.	SP

### Revision Schedule



**CR Parrott** Consultants Limited

Architecture . Structural Engineering . Project Management

Prince House, Queensway Court, Arkwright Way, Scunthorpe  
T. 01724 278155 E.info@crparrott.co.uk

Suites F25-F26, Innovation Centre, Innovation Way, Europarc, Grimsby  
T. 01472 268485 E.info@crparrott.co.uk

New Warehouse Extension at Grove  
Products Limited

Grove Products Limited, Broadway,  
Hyde, Cheshire, SK14 4QF

Proposed Perspective Views of Site

Drawn : AB	Date : 04/02/16	Scale :
Checked : MB	Drawing No. CP7351.	Sheet size. A3
Approved : MB	28	Revision A

Application Number: 16/00452/FUL

Photo 1



Photo 2

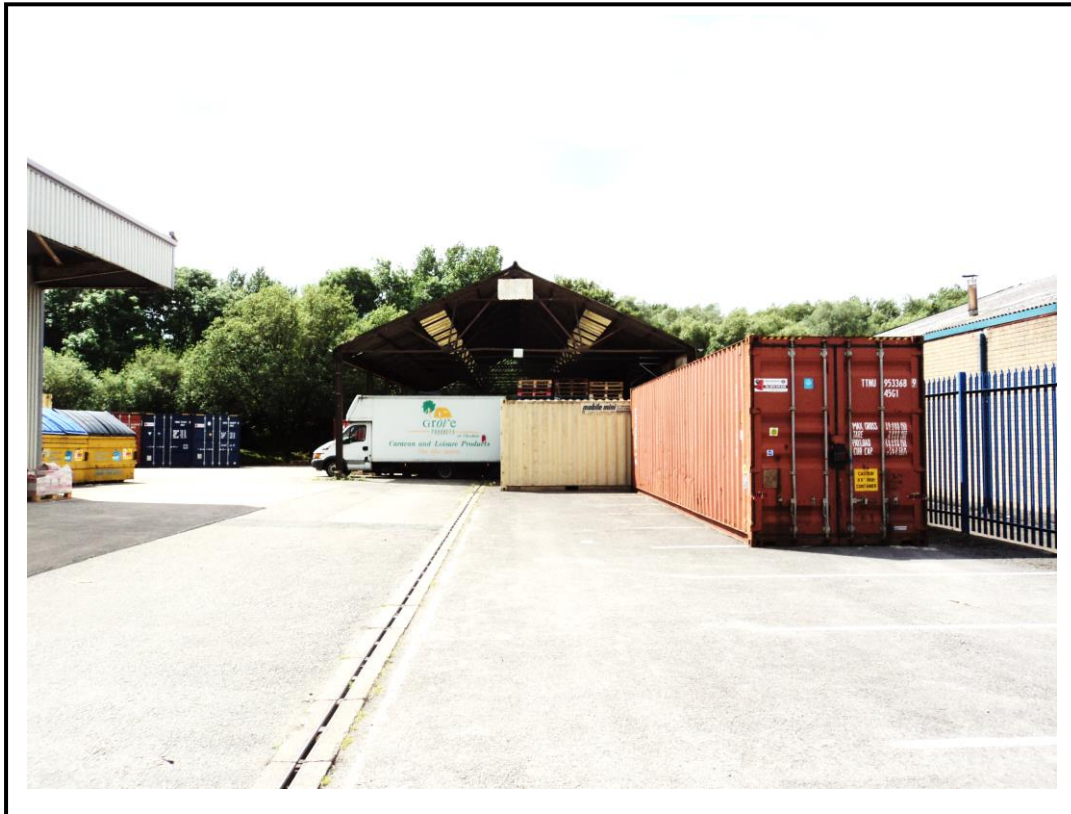


Photo 3



Photo 4

